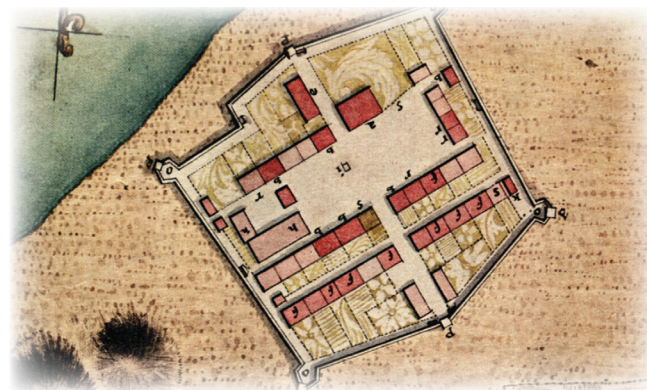


MAP & SCHEDULE

Welcome to Colonial Michilimackinac! As you walk through the site you are stepping back in time to 1781, when local and global forces uprooted the entire community as soldiers and civilians relocated to Mackinac Island. After six decades as a thriving diplomatic and economic hub, Michilimackinac came to an end in 1781. All the buildings have exhibits or historical interpreters inside. While your visit to the fort is self-guided, you may find it easiest to begin your tour at the Voyageur Landing before heading inside, then following the numbered buildings.



ARCHAEOLOGY IN PROGRESS

In its 66th season, the dig at Colonial Michilimackinac continues this summer, one of the longest ongoing excavations of its kind in the nation.



EXTEND YOUR VISIT IN MACKINAW CITY!



VISIT OLD MACKINAC POINT LIGHTHOUSE

The lighthouse is just a short walk from the Visitor's Center entrance at the other end of Michilimackinac State Park. Established in 1889, the lighthouse features exhibits, demonstrations, and the Straits of Mackinac Shipwreck Museum. **Combo Ticket Available**



EXPLORE HISTORIC MILL CREEK

Just three miles east of Colonial Michilimackinac on US-23. Smell the sawdust at the old sawpit, witness the awesome power of the water used to cut timber into lumber, and discover life beyond the sawmill during engaging programs. **Mainland Combo Ticket Available**

mackinacparks.com

#thisismackinac



HIGHLIGHTS



LIVE PROGRAMS

Demonstrations by historical interpreters are conducted throughout the day. Consult the schedule inside for times and locations. Presentations are announced near the center of the fort.

MOVIES

Michilimackinac: Crossroads of the Great Lakes, a 15-minute movie, is presented in the **King's Storehouse 5**. It plays every 20 minutes. *Attack! at Michilimackinac* presents the most dramatic event in the fort's history. It plays continuously in the **Southwest Rowhouse 11**.

EXHIBITS

All of the buildings in the fort are open and furnished with period rooms or themed exhibits. Special exhibits include:

- **New for 2024! *Slavery at the Straits***, in the **Southwest Rowhouse 11**, shows how, throughout the 17th and 18th centuries, slavery was an integral part of the community at Michilimackinac and in Michigan.
- *France at Mackinac 1670–1760* in the **South Southwest Rowhouse 20** explores Michilimackinac as it was under the French regime.
- *Treasures from the Sand* is an underground exhibit exploring the process of historical archaeology. Enter through the **Northwest Rowhouse 7**.
- *Redcoats on the Frontier* describes the life of the British soldier. Located in the **Soldier's Barracks 13**.
- **Powder Magazine 18** and *Firearms on the Frontier 19* are subterranean exhibits featuring the preserved ruins of this military structure. Enter at the **South Southeast Rowhouse 18**.
- **Commanding Officer's House 14** showcases the life of Michilimackinac's commanding officer.

VISITOR SERVICES

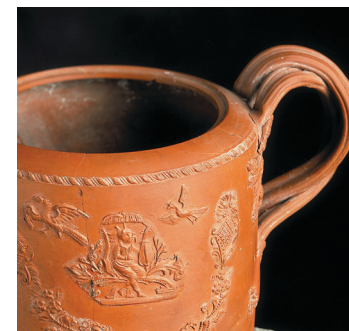
SHOPPING

The Museum Store in the Visitor's Center and the **Hearthside Museum Store** in the **South Southwest Rowhouse 20** offer a wide range of books, souvenirs, and specialty gift items.



RESTROOMS

Located in the **South Southwest Rowhouse 20** inside the fort, and to the south of the entrance path **23** outside the fort. Restrooms are also available adjacent to the parking lot.



COURTESIES

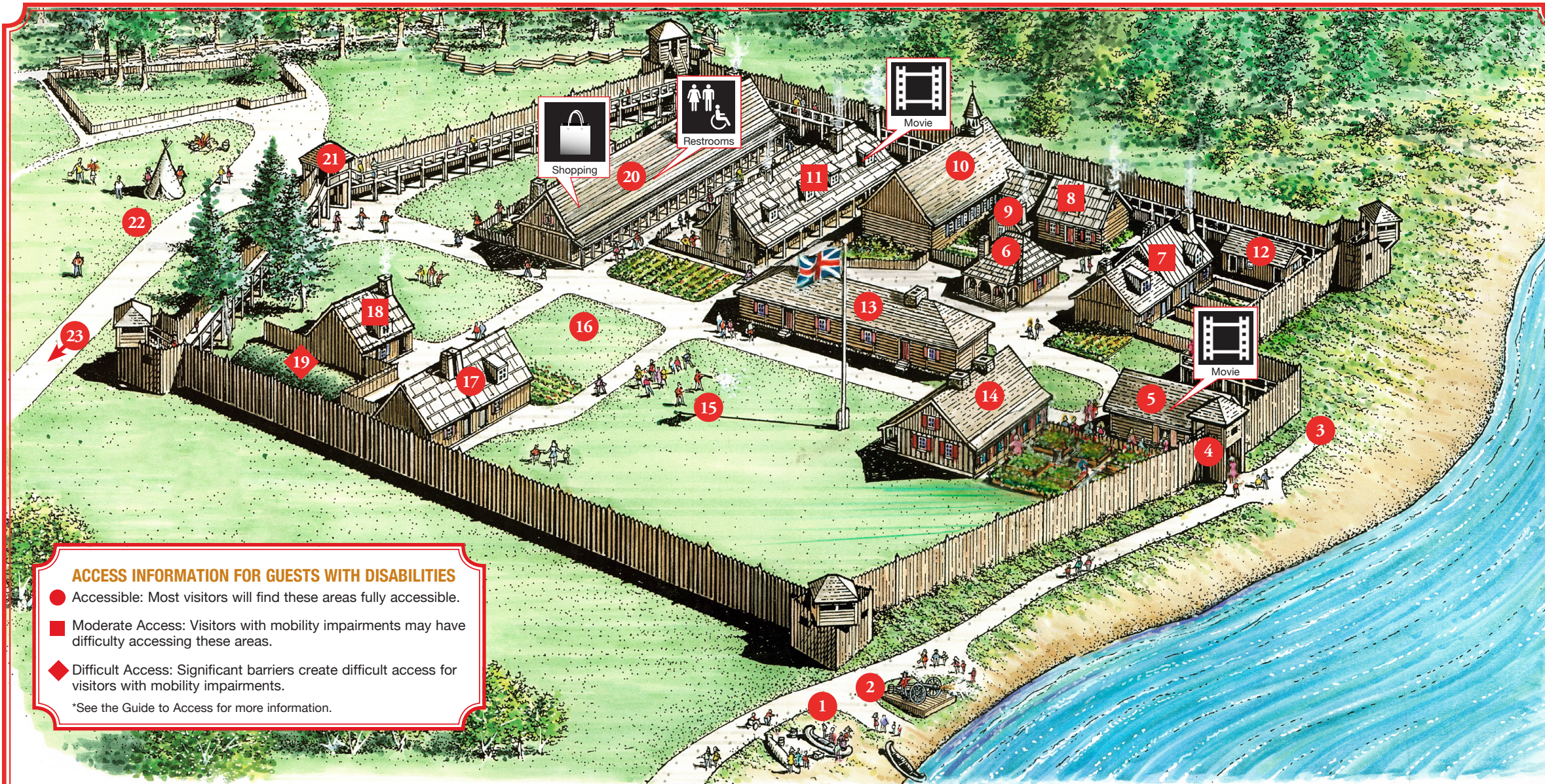
- Colonial Michilimackinac is a smoke-free site.
- Pets on leashes are welcome.
- Please silence electronic devices in the theaters and during live demonstrations.
- Please cover ears for firing demonstrations.
- Please respect other guests and our resources during your visit.



Friends Preserving and Sharing Mackinac's Heritage

Generous support for many programs and exhibits is provided by Mackinac Associates.

Find out how to become a member or how to make a donation at the admission area or the **Hearthside Museum Store** in the **South Southwest Rowhouse 20**.



ACCESS INFORMATION FOR GUESTS WITH DISABILITIES

- Accessible: Most visitors will find these areas fully accessible.
 - Moderate Access: Visitors with mobility impairments may have difficulty accessing these areas.
 - ◆ Difficult Access: Significant barriers create difficult access for visitors with mobility impairments.
- *See the Guide to Access for more information.

DEMONSTRATION SITES AND PLACES OF INTEREST

*Alternate program or entrance available. Please see the Guide to Access for information.

- | | | | | | | | |
|-----|--|----|----------------------------------|----|--|----|----------------------------|
| 1 | Voyageur Landing | 8 | Priest's House* | 14 | Commanding Officer's House | 19 | Powder Magazine |
| 2-3 | Artillery Platforms | 9 | Blacksmith Shop | 15 | Parade Ground | 20 | South Southwest Rowhouse |
| 4 | Water Gate | 10 | Church of Ste. Anne* | 16 | Archaeological Site | ■ | France at Mackinac Exhibit |
| 5 | King's Storehouse | 11 | Southwest Rowhouse | ■ | In progress during the summer | ■ | Hearthside Museum Store |
| ■ | Michilimackinac: Crossroads of the Great Lakes Movie | ■ | Slavery at the Straits Exhibit | 17 | Southeast Rowhouse | ■ | Restrooms |
| ■ | Merchant's House | ■ | Merchant's House | ■ | Lt. Clowes' House | 21 | Land Gate |
| ■ | Soldier's House | ■ | Attack! at Michilimackinac Movie | ■ | Solomon-Levy House | 22 | Native American Encampment |
| 6 | Guardhouse | 12 | Military Latrine | 18 | South Southeast Rowhouse* | 23 | Restrooms |
| 7 | Northwest Rowhouse | ■ | Redcoats on the Frontier Exhibit | ■ | Powder Magazine & Firearms on the Frontier Exhibit | | |
| ■ | British Trader's House | | | | | | |
| ■ | Treasures from the Sand Exhibit* | | | | | | |

TODAY'S EVENTS

PROGRAMS WILL BE ANNOUNCED IN THE CENTER OF THE FORT

- 10:00 a.m. Bales, Barrels and Boxes: Supplying the Great Lakes Fur Trade Program
- 10:30 a.m. Artillery Firing Demonstration
- 11:00 a.m. Michilimackinac's Enslaved Community Program
- 12:00 p.m. The Pleasures of the Table: Dining Culture at the Merchant's House Program
- 12:30 p.m. Musket Firing Demonstration
- 1:00 p.m. More than Soldiers: Civilians at Michilimackinac Program
- 2:00 p.m. Michilimackinac 1781: The End Program
- 3:00 p.m. People of the Fur Trade Program
- 3:30 p.m. Artillery Firing Demonstration
- 4:00 p.m. Building Michilimackinac: Architecture on the Frontier Program
- 4:30 p.m. Some Tea and Loaf Sugar: Tea at the British Trader's House
- 5:00 p.m. Regulars on the Frontier: Barracks Life Program
- 5:30 p.m. Gardens of Michilimackinac Program
- 6:30 p.m. Musket Firing Demonstration

Schedule subject to change to accommodate special events.

TODAY'S HOURS

9:30 a.m. to 7:00 p.m.
last admission at 6:00 p.m.



Colonial Michilimackinac is owned and operated by the Mackinac Island State Park Commission. Protecting, preserving and presenting Mackinac's historic and natural resources since 1895.
©2024 Mackinac Island State Park Commission